



DUAL HOMEPORT FROM  
MALAYSIA & SINGAPORE

# Genting Dream

*A Resort Cruising At Sea*

# A Resort Cruising At Sea



What a day on the Genting Dream looks like...

## The long and short of the Genting Dream

At 335m end to end, we're bigger than a skyscraper and way more fun.



Take a virtual 360° tour

Gross Tonnage **150,695 tons**  
 Length **335m**  
 Width **40m**  
 Decks **18**  
 Passenger Capacity **3,352 (Lower Berth)**  
 Staterooms **1,674**  
 Manufacturer **Meyer Werft, Germany**



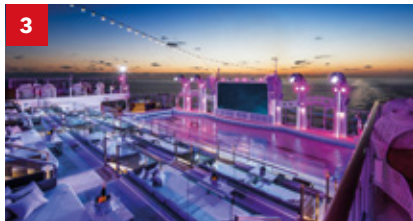
### 1 Rope Course & Zipline

Feel the thrill of gliding above the ocean on a 35-metre zipline.



### 2 Waterslide Park

Get drenched in fun on one of our six different waterslides.



### 3 Zouk & Zouk Beach Club

There's a party going on somewhere! Dive in at one of our famous pool parties or dance till dawn with our guest DJs at Zouk.



### 4 The Palace

An exclusive all-suite, all-inclusive enclave with private facilities and European-style butlers. It is a ship-within-a-ship boutique hotel for connoisseurs of true luxury and hospitality.



### 5 The Lido

Our buffet-style restaurant with a smorgasbord of international and halal cuisine including vegetarian and non-vegetarian Indian dishes.



### 6 Bar City

Sit back and enjoy world-renowned vintages, premium Scotch whiskies, cocktails or bubbly while we entertain you with performances and live bands.



### 7 Crystal Life Spa

Rejuvenate your mind, body and spirit in our Asian and Western-style spas. You can also enjoy a selection of healthy meals and beverages here.



### 8 The Boutiques

Spurge on International luxury brands at our boutiques or outlet store.



### 9 Little Dreamers Club

Leave the kids with us while you explore the ship. They'll love our exciting line up of activities and classes. For kids aged 2 to 12.



### 10 Zodiac Theatre

Enjoy live production shows from our acclaimed entertainment team.





**PALACE VILLA** Approx. 224 sq.m | Max Occupancy 6 | Deck 17 | 1 King-size Bed + 1 Queen-size Bed + 1 Double Sofa Bed

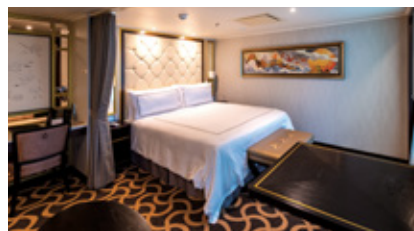


**PALACE PENTHOUSE** Approx 56 - 115.4 sq.m | Max Occupancy 4 - 6\* | Deck 13 / 16 | 1 King-size Bed + 1 Double Sofa Bed / 1 Queen-size Bed + 2 Double Sofa Beds / 1 Queen-size Bed + 1 Double Sofa Bed



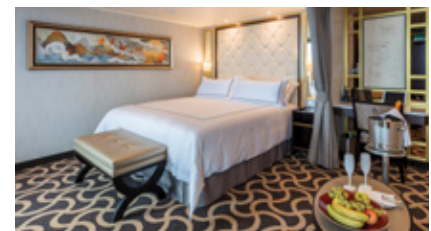
**PALACE DELUXE PREMIUM**

From 41 - 61 sq.m  
Max Occupancy 4  
Deck 9 / 10 / 11 / 12 / 13 / 15  
1 King-size Bed + 1 Double Sofa Bed



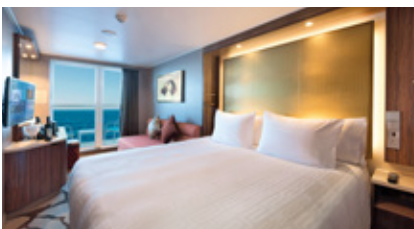
**PALACE DELUXE SUITE**

From 41 sq.m  
Max Occupancy 4  
Deck 15  
1 Queen-size Bed + 1 Double Sofa Bed



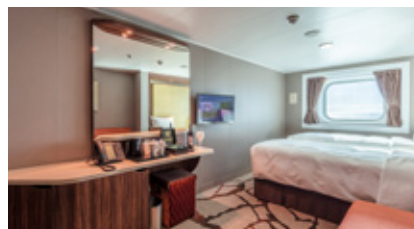
**PALACE SUITE**

From 37 - 40 sq.m  
Max Occupancy 4  
Deck 13 / 15 / 16 / 17  
1 Queen-size Bed + 1 Double Sofa Bed



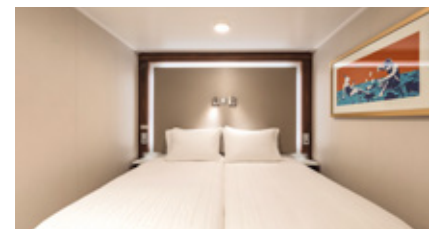
**BALCONY / BALCONY DELUXE STATEROOM**

From 20 sq.m / From 22 - 28 sq.m  
Max Occupancy 3 - 4 / 2 - 4  
Deck 8 / 9 / 10 / 11 / 12 / 13 / 15  
1 Queen-size Bed + 1 Single Sofa Bed / 1 Single Sofa Bed + 1 Ceiling Pullman Bed / 1 Double Sofa Bed



**OCEANVIEW STATEROOM**

From 16 - 35 sq.m  
Max Occupancy 2 - 4  
Deck 5 / 9 / 10 / 11 / 12 / 13  
2 Single Beds / 2 Single Beds + 1 Single Sofa Bed / 2 Single Beds + 1 Single Sofa Bed + 1 Ceiling Pullman Bed



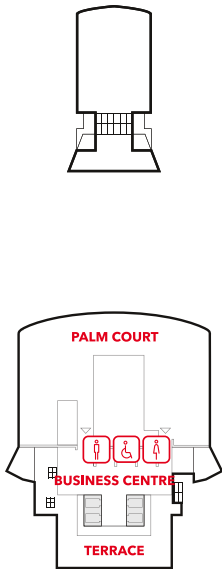
**INTERIOR STATEROOM**

From 13 - 14 sq.m  
Max Occupancy 2 - 4^  
Deck 5 / 8 / 9 / 10 / 11 / 12 / 13 / 15  
2 Single Beds / 2 Single Beds + 1 Ceiling Pullman bed / 1 Single Bed + 1 Pullman Bed + Double Sofa Bed

\* The maximum occupancy of designated Palace Penthouses can be up to 6 guests upon request, subject to stateroom availability.

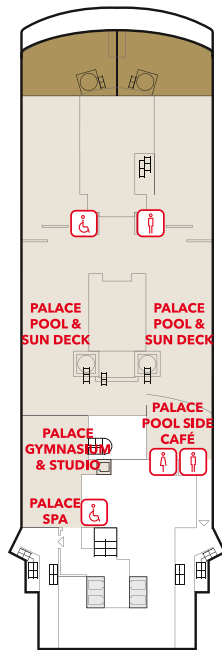
^ The above image is for a stateroom configuration for 2 persons - other stateroom configurations for 3 persons and 4 persons are also available.

# Genting Dream Deck Plans



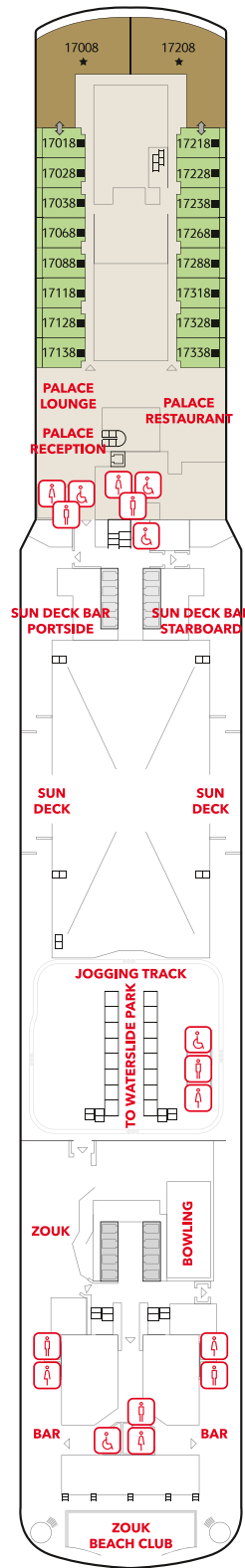
**DECK 19**

Lounge, Business Centre & SportsPlex



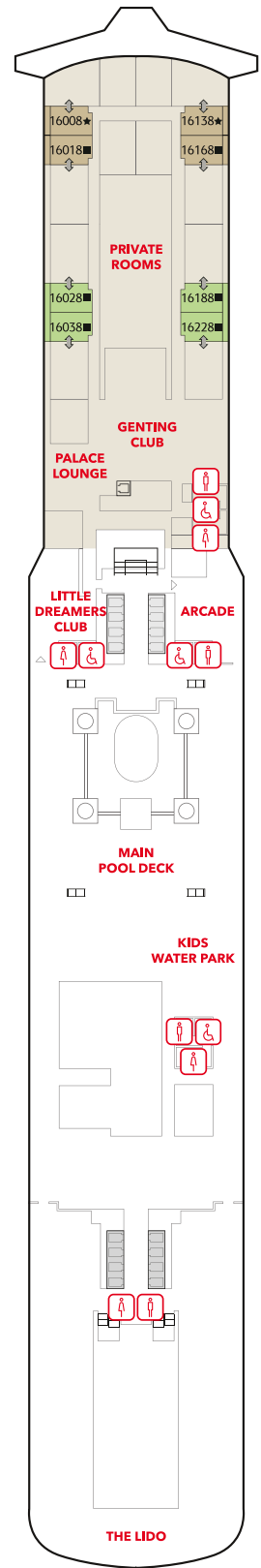
**DECK 18**

The Palace, Ropes Course, Mini-Golf, Rock Climbing Wall & Zouk Private Party Deck



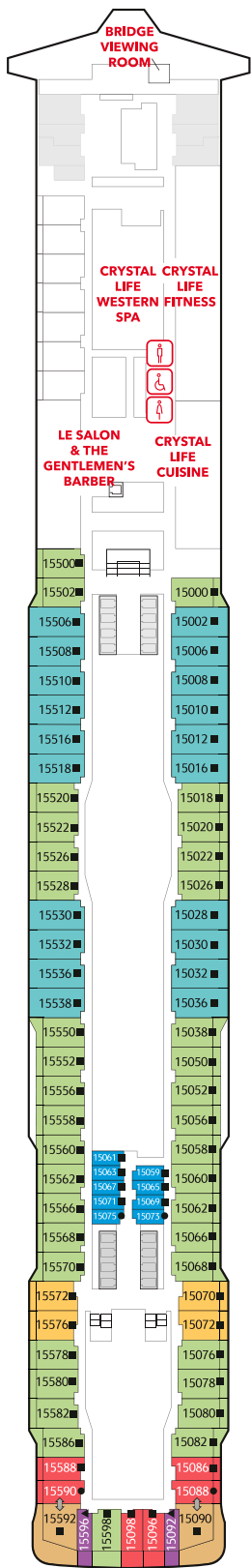
**DECK 17**

The Palace, Suites, Zouk & Zouk Beach Club



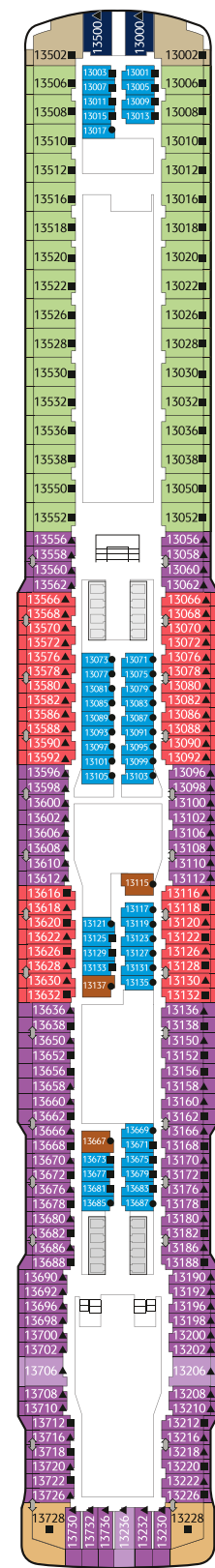
**DECK 16**

Genting Club, Suites, Entertainment Venues, Water Activities & Restaurant



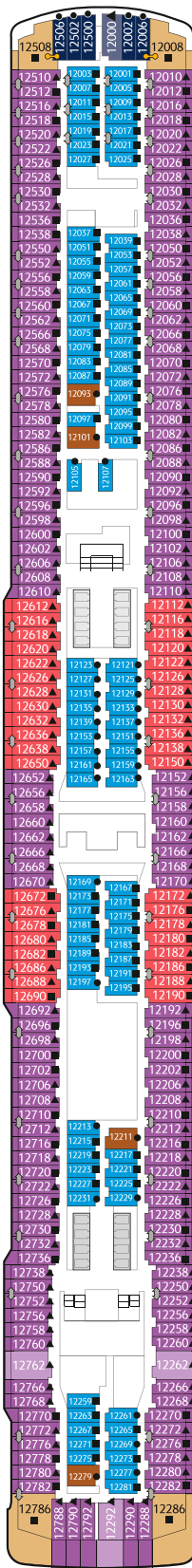
**DECK 15**

Western Spa, Fitness Centre, Suites, Balcony Deluxe, Balcony & Interior Staterooms



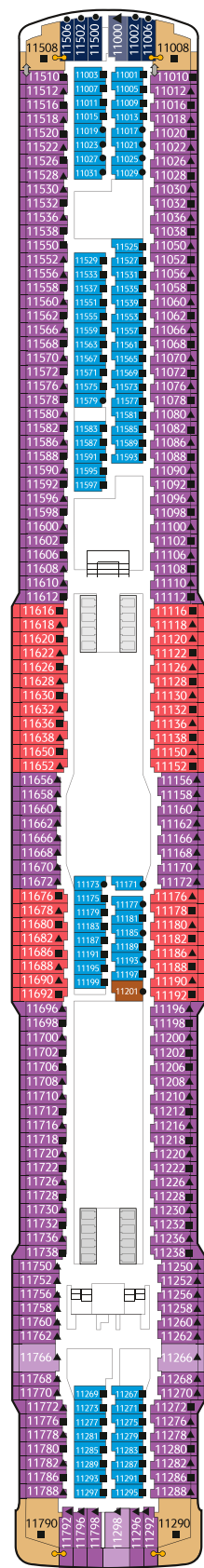
**DECK 13**

Suites, Balcony Deluxe, Balcony, Oceanview & Interior Staterooms



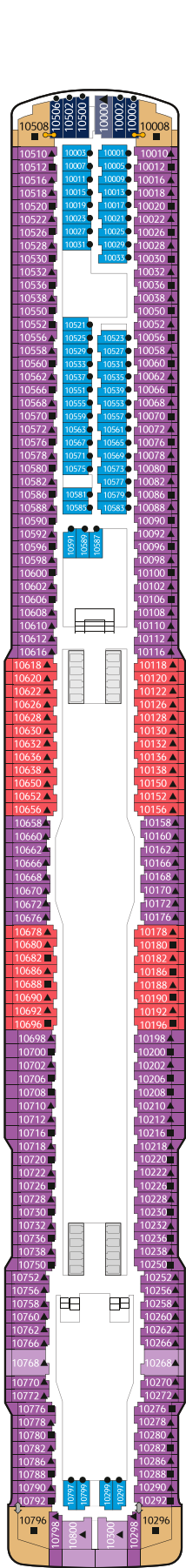
**DECK 12**

Suites, Balcony Deluxe, Balcony, Oceanview & Interior Staterooms



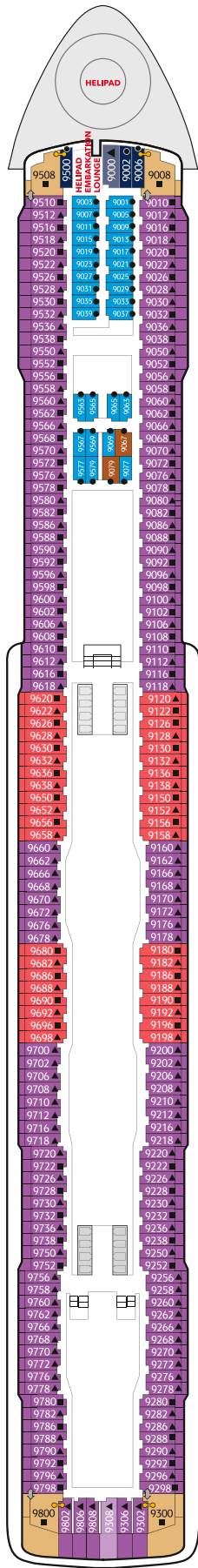
**DECK 11**

Suites, Balcony Deluxe, Balcony, Oceanview & Interior Staterooms



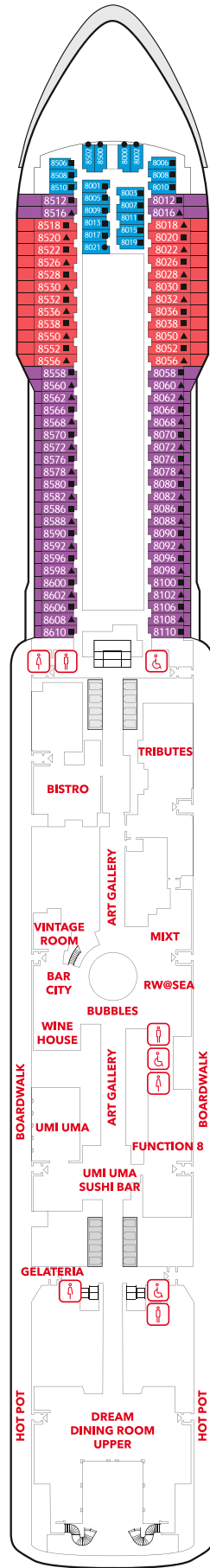
**DECK 10**

Suites, Balcony Deluxe, Balcony, Oceanview & Interior Staterooms



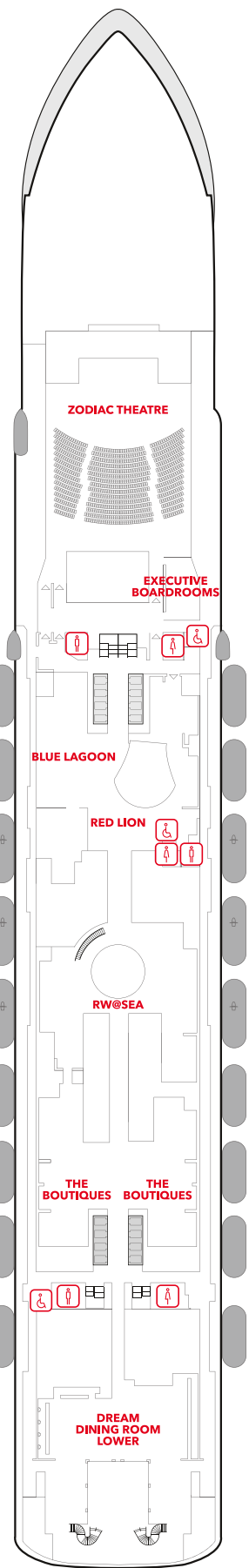
**DECK 9**

Suites, Balcony Deluxe, Balcony, Oceanview & Interior Staterooms, Helipad



**DECK 8**

Restaurants, Bars, Lounges & Multi-purpose Venue, Balcony Deluxe, Balcony & Interior Staterooms



**DECK 7**

Main Theatre, Executive Boardrooms, Restaurants, Retail Venues & Entertainment Venues







# THE PALACE

## A Brand New Elevated Experience

The Palace is our all-suite concept within Genting Dream, your private club on board - the largest luxury ship-within-a-ship enclave found on any cruise liner. For connoisseurs of true Asian luxury, hospitality and exuberant living.

### *All-Inclusive Privileges*

- 1 All-Suite Accommodations
- 2 All-Butler Service
- 3 All-Indulgent Benefits
- 4 All-Encompassing Spaces

#### On your arrival

- Access to VIP lounge at terminal
- Priority check-in with butler assistance
- Fast track security clearance
- Priority luggage check-in and check-out with express delivery

#### In your suite

- 24-hour butler concierge service
- Standard Wi-Fi package throughout cruise
- Dream beds and luxurious Italian linens from Frette™
- Premium bath amenities
- Nespresso™ machine with gourmet coffee and tea
- Welcome minibar beverages and snacks
- Welcome beverages, fruit plate and snacks

#### When you dine

- Exclusive access to The Palace Restaurant
- Set meal entitlements at designated specialty dining restaurants
- Happy Hour with complimentary drinks such as selected wines, beers and non-alcoholic beverages at selected venues
- Free-flow of chilled juices, Chinese and Japanese teas, and coffee throughout the day at selected venues
- Priority booking for Chef's Table and Vintage Room

#### When you explore

- Priority access to live production shows
- Selected exclusive Kids Programme for children between 2 and 12 years of age

*Privileges are subject to change without prior notice.*

WEBSITE

[www.rwcruises.com](http://www.rwcruises.com)

HONG KONG ONLY

+852 800 938 887

EMAIL

[reservations.en@rwcruises.com](mailto:reservations.en@rwcruises.com)

MALAYSIA ONLY

1800814852



[resortsworldcruises](https://www.resortsworldcruises.com)

SINGAPORE & OTHER MARKETS

+65 800 852 8188